

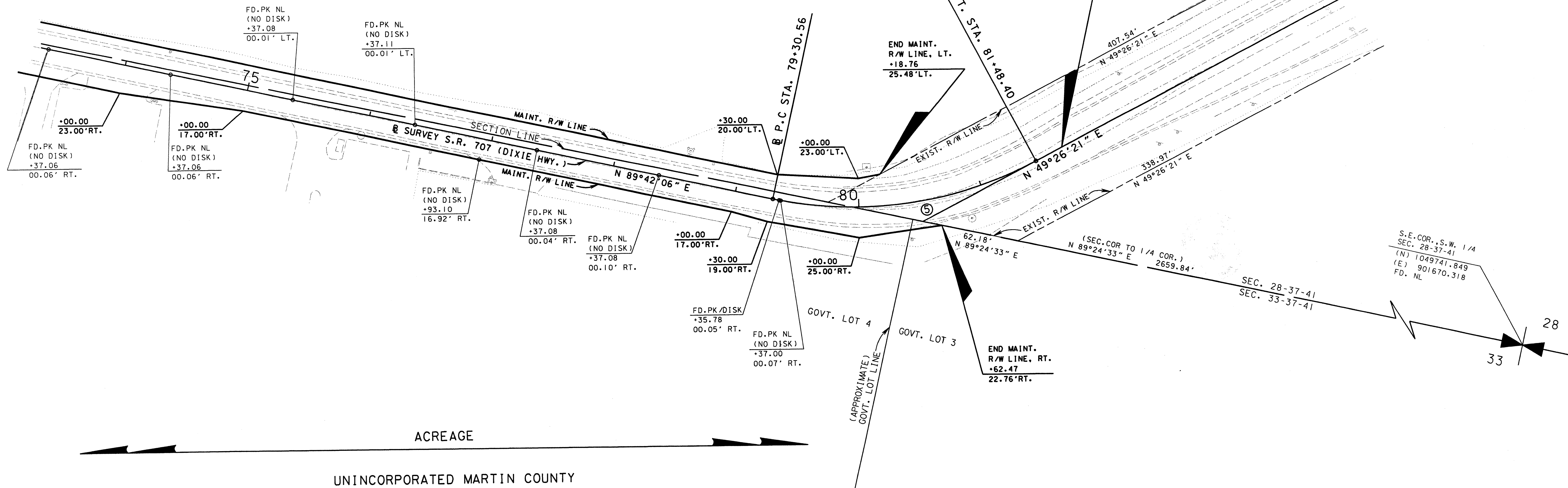
SEC. 28, TWP. 37 S., RGE. 41 E.  
 SEC. 33, TWP. 37 S., RGE. 41 E.  
 SCALE 1" = 40'

UNINCORPORATED MARTIN COUNTY

ACREAGE

Ⓢ CURVE Ⓢ  
 P.I. STA. 80+44.19  
 (N) 1,049,721.347  
 (E) 900,340.608  
 $\Delta = 40^\circ 15' 45''$  LT.  
 $D = 18^\circ 28' 57''$   
 $T = 113.64'$   
 $L = 217.84'$   
 $R = 310.00'$   
 P.C. STA. 79+30.56  
 (N) 1,049,720.755  
 (E) 900,226.974  
 P.T. STA. 81+48.40  
 (N) 1,049,795.239  
 (E) 900,426.939

END MAINT. PROJECT  
 89030-MAINT.(3)  
 Ⓢ STA. 81+71.95 (BACK) -  
 Ⓢ STA. 111+41.63 (AHEAD)  
 BEGIN SEC. 89030-2535  
 (N) 1,049,810.553  
 (E) 900,444.830



ACREAGE

UNINCORPORATED MARTIN COUNTY

SEE SHEET 1 FOR GENERAL NOTES, CERTIFICATIONS, LEGEND, ETC.

MAINTENANCE MAP

FLORIDA DEPARTMENT OF TRANSPORTATION  
 RIGHT OF WAY MAPPING

APPROVED BY  
*Jeffrey Smith* 2/11/03  
 DISTRICT RIGHT OF WAY SURVEYOR

REVISION	BY	DATE	REVISION	BY	DATE

	BY	DATE
PRELIM	L. CEFOLIA	5/17/02
FINAL	L. CEFOLIA	10/10/02
CHECKED	J. EDGAR	10/11/02

FED. PROJ. NO. N/A SECTION 89030-MAINT.(3)  
 STATE ROAD 707 (DIXIE HWY.) MARTIN COUNTY

MAPS PREPARED BY LB# 696 KIMLEY-HORN AND ASSOCIATES	FIELD BOOK NO.'S SEE SHEET 1
W.P.I. No. N/A	SCALE: 1" = 40'
ITEM/SEGMENT NO. 4035911	SHEET 6 OF 6